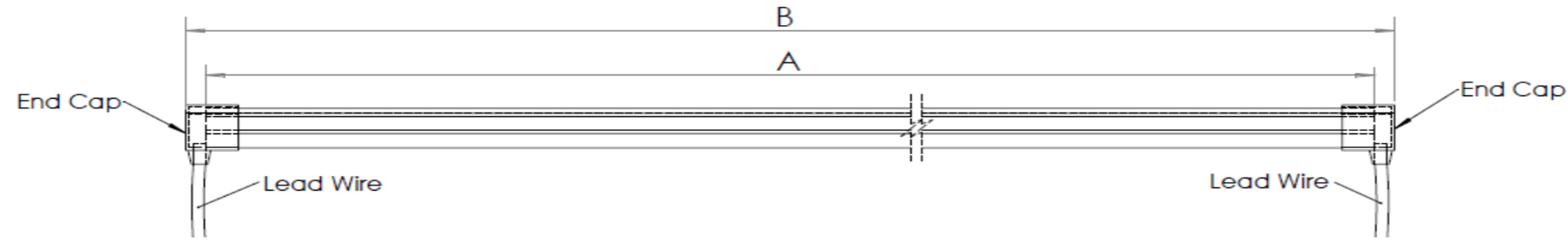




RGB Flexible Tube Cutting Length & Part No.



Dimensions in the table are for lengths with two wire configuration. For lengths with one wire, deduct 4.8mm / 0.1875" from the finished length 'B'.

Nominal Length	Tube Cut Length A		Finished Length B		Nominal Length	Tube Cut Length A		Finished Length B		Nominal Length	Tube Cut Length A		Finished Length B	
	Part No.	mm	Inch	mm		Inch	Part No.	mm	Inch		mm	Inch	Part No.	mm
2	41.7	1.6	60.7	2.39	68	1708.5	67.3	1727.5	68.01	133	3375.0	132.9	3394.0	133.62
4	83.3	3.3	102.3	4.03	69	1750.1	68.9	1769.1	69.65	135	3416.7	134.5	3435.7	135.26
5	125.0	4.9	144.0	5.67	71	1791.8	70.5	1810.8	71.29	137	3458.3	136.2	3477.3	136.90
7	166.7	6.6	185.7	7.31	73	1833.5	72.2	1852.5	72.93	138	3500.0	137.8	3519.0	138.55
9	208.4	8.2	227.4	8.95	74	1875.2	73.8	1894.2	74.57	140	3541.7	139.4	3560.7	140.19
10	250.0	9.8	269.0	10.59	76	1916.8	75.5	1935.8	76.22	141	3583.3	141.1	3602.3	141.83
12	291.7	11.5	310.7	12.23	78	1958.5	77.1	1977.5	77.86	143	3625.0	142.7	3644.0	143.47
14	333.4	13.1	352.4	13.87	79	2000.2	78.7	2019.2	79.50	145	3666.7	144.4	3685.7	145.11
15	375.0	14.8	394.0	15.51	81	2041.8	80.4	2060.8	81.14	146	3708.3	146.0	3727.3	146.75
17	416.7	16.4	435.7	17.16	82	2083.5	82.0	2102.5	82.78	148	3750.0	147.6	3769.0	148.39
18	458.4	18.0	477.4	18.80	84	2125.2	83.7	2144.2	84.42	150	3791.7	149.3	3810.7	150.03
20	500.0	19.7	519.0	20.44	86	2166.8	85.3	2185.8	86.06	151	3833.3	150.9	3852.3	151.67
22	541.7	21.3	560.7	22.08	87	2208.5	86.9	2227.5	87.70	153	3875.0	152.6	3894.0	153.31
23	583.4	23.0	602.4	23.72	89	2250.2	88.6	2269.2	89.34	155	3916.7	154.2	3935.7	154.95
25	625.1	24.6	644.1	25.36	91	2291.9	90.2	2310.9	90.98	156	3958.3	155.8	3977.3	156.59
27	666.7	26.2	685.7	27.00	92	2333.5	91.9	2352.5	92.62	158	4000.0	157.5	4019.0	158.23
28	708.4	27.9	727.4	28.64	94	2375.2	93.5	2394.2	94.26	160	4041.7	159.1	4060.7	159.87
30	750.1	29.5	769.1	30.28	96	2416.9	95.2	2435.9	95.90	161	4083.3	160.8	4102.3	161.51
32	791.7	31.2	810.7	31.92	97	2458.5	96.8	2477.5	97.54	163	4125.0	162.4	4144.0	163.15
33	833.4	32.8	852.4	33.56	99	2500.2	98.4	2519.2	99.18	164	4166.7	164.0	4185.7	164.79
35	875.1	34.5	894.1	35.20	100	2541.7	100.1	2560.7	100.82	166	4208.7	165.7	4227.7	166.45
36	916.7	36.1	935.7	36.84	102	2583.3	101.7	2602.3	102.46	168	4250.3	167.3	4269.3	168.09
38	958.4	37.7	977.4	38.48	104	2625.0	103.3	2644.0	104.10	169	4292.0	169.0	4311.0	169.73
40	1000.1	39.4	1019.1	40.12	105	2666.7	105.0	2685.7	105.74	171	4333.7	170.6	4352.7	171.37
41	1041.8	41.0	1060.8	41.76	107	2708.3	106.6	2727.3	107.38	173	4375.4	172.3	4394.4	173.01
43	1083.4	42.7	1102.4	43.40	109	2750.0	108.3	2769.0	109.02	174	4417.0	173.9	4436.0	174.65
45	1125.1	44.3	1144.1	45.04	110	2791.7	109.9	2810.7	110.66	176	4458.7	175.5	4477.7	176.29
46	1166.8	45.9	1185.8	46.69	112	2833.3	111.5	2852.3	112.30	178	4500.4	177.2	4519.4	177.93
48	1208.4	47.6	1227.4	48.33	114	2875.0	113.2	2894.0	113.94	179	4542.0	178.8	4561.0	179.57
50	1250.1	49.2	1269.1	49.97	115	2916.7	114.8	2935.7	115.58	181	4583.7	180.5	4602.7	181.21
51	1291.8	50.9	1310.8	51.61	117	2958.3	116.5	2977.3	117.22	183	4625.4	182.1	4644.4	182.85
53	1333.4	52.5	1352.4	53.25	119	3000.0	118.1	3019.0	118.86	184	4667.0	183.7	4686.0	184.49
55	1375.1	54.1	1394.1	54.89	120	3041.7	119.8	3060.7	120.50	186	4708.7	185.4	4727.7	186.13
56	1416.8	55.8	1435.8	56.53	122	3083.3	121.4	3102.3	122.14	187	4750.4	187.0	4769.4	187.77
58	1458.5	57.4	1477.5	58.17	123	3125.0	123.0	3144.0	123.78	189	4792.1	188.7	4811.1	189.41
59	1500.1	59.1	1519.1	59.81	125	3166.7	124.7	3185.7	125.42	191	4833.7	190.3	4852.7	191.05
61	1541.8	60.7	1560.8	61.45	127	3208.3	126.3	3227.3	127.06	192	4875.4	191.9	4894.4	192.69
63	1583.5	62.3	1602.5	63.09	128	3250.0	128.0	3269.0	128.70	194	4917.1	193.6	4936.1	194.34
64	1625.1	64.0	1644.1	64.73	130	3291.7	129.6	3310.7	130.34	196	4958.7	195.2	4977.7	195.98
66	1666.8	65.6	1685.8	66.37	132	3333.3	131.2	3352.3	131.98	197	5000.0	196.9	5019.0	197.60

Note: - Cutting increment is 41.7mm
 - Dimensional tolerance of +/- 1.6mm / 0.0625"