

Specifications Sheet

UV Ballasts

UVB160WHO-120-277V-PD

1. Lamp Type

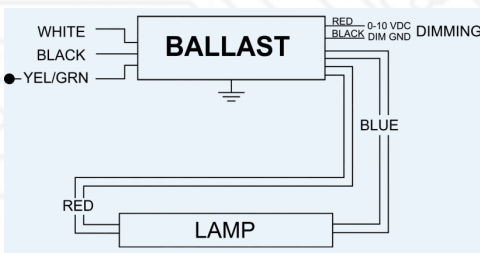
Lamp Type / Cata #	Manufacture	# of Lamps	Power (W)	Current (mA)
001.0617045 XUV64L	Light Sources	1	155	800
TUV64T5HO	Philips	1	145	800
GPH1148T5L/HO	Light Sources	1	120	800
TUV PL-L95W/HO	Philips	1	95	800

2. Electrical

Ballast type: Program Start (PS)
Number of lamps: 1
Normal input voltage: 120-277V, +/- 10%, 50-60 Hz
Input current: 1.35A (120V) / 0.64A (277V)
Input power: 160W @ full load
Operating frequency: > 25 kHz
Power factor: > 95%
Efficiency: > 90%

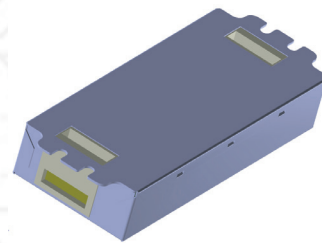
Ballast shut down/protection: EOL/OC
Dimming range: 100% to 50%
Dimming control: 0-10VDC
Ambient temperature: 0 - 40° C
Case maximum temperature: 75° C
Approvals: UL/cUL Listed, Class "P",
Indoor, Type 1, CE
Sound rating: "A"

3. Wiring Diagram



4. Mechanical Data

Dimensions: 8.0" (L) x 3.0" (W) x 1.40" (H)



5. Features

Terminals are available for external LED to show lamp status: purple (+), grey (-) 2.5V. 0 - 10V dimming. LED lamp indicator.



Allanson
LIGHTING TECHNOLOGIES

83 Commerce Valley Drive East, Markham ON, L3T 7T3
www.allanson.com | cservice@allanson.com | T: 1.800.661.7251 | F: 416.752.6717