



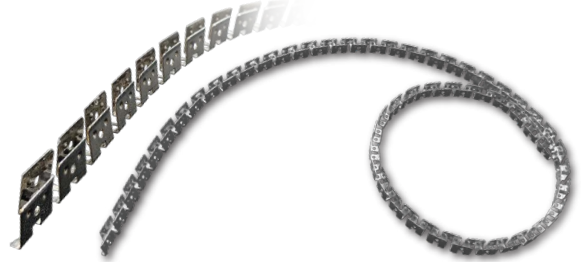
1. Prepare Materials and Accessories



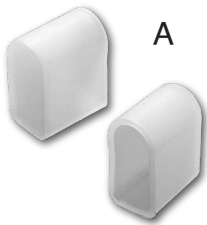
6mm RGB LED FBT



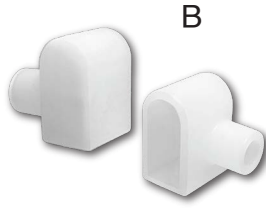
Aluminum track (1m)



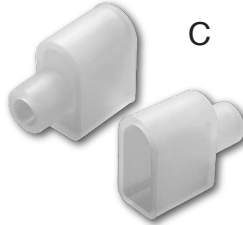
Flexible track (5m)



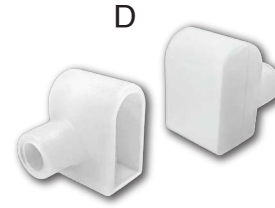
A



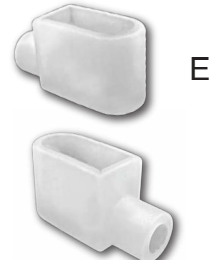
B



C



D



E

End Cap

- A. No Exit
- B. Side Exit (R)
- C. Straight Exit
- D. Side Exit (L)
- E. Bottom Exit



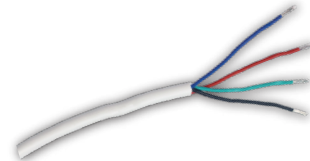
1



2

Installation Clips

- 1. Plastic
- 2. Aluminum



Pigtails Wire



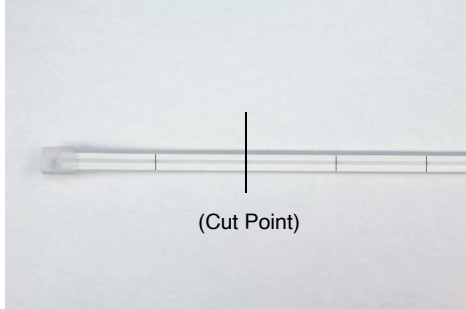
Silicone Sealant



Cutter Tool



2. Installation Preparation

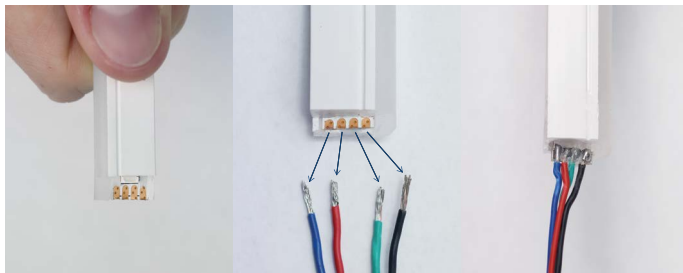


1. Position the FBT colored tube upright, ensuring that the colored stripes are facing upwards. Measure your required length from right to left to the centre point of the black lines.

For better visibility, shine a light through the backside of the tube to display the position of the black lines.



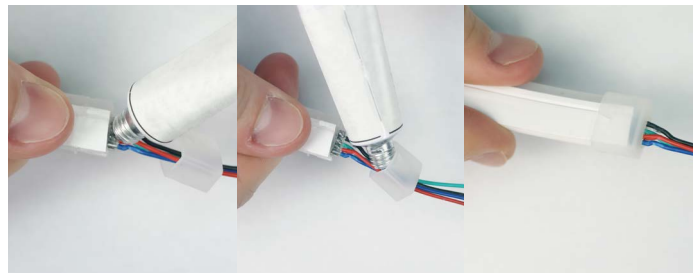
2. Cut to the required length on the line



3. Peel silicone to expose solder pad

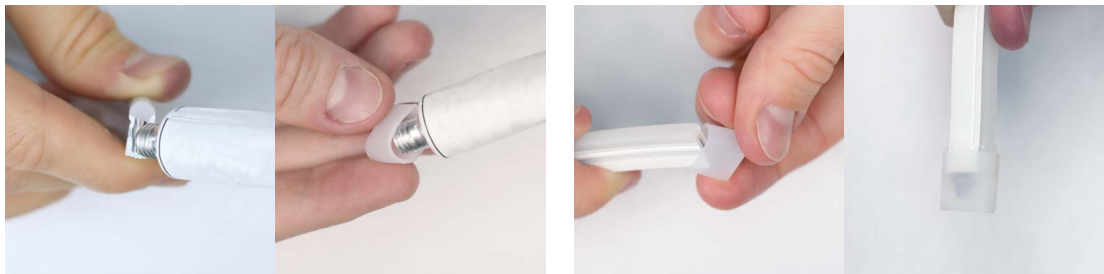
4. Order wires: Black, Green, Red, and Blue

5. Solder wires*



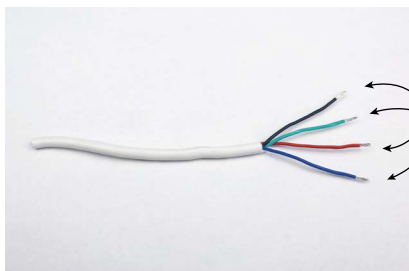
6. Place end cap on tube and seal with silicone (wait 10 minutes)

NOTE! Light wires exhibit polarity: "+" solder pad is located on the illuminating surface, and "-" solder pad is located on the bottom side.



7. Apply silicone to dead end and end cap

8. Place end cap on dead end (wait 10 minutes)



*When trimming one end of the lead wire. The stripped end should not exceed **3/16"**. This will minimize shorting the contacts.



6mm LED FBT Soldering Demo



Wi-Fi Controller Connection Demo



3. Installation Process - Surface Mounted Installation Methods

Flexible Track Method



1. Select installation location and outline with flexible track then fix to surface

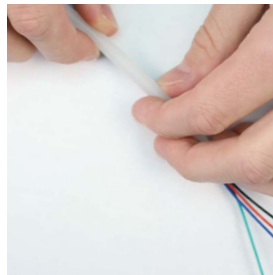


2. Fix flex tube onto flexible track

Mounting Clip Method



1. Select installation location and fix mounting clip to surface



2. Fix flex tube onto mounting clip

Inline Groove Method



1. Prepare a 7mm width groove into surface, Make sure its flat and clean



2. Place mounting clip into groove and fix using screws or silicone