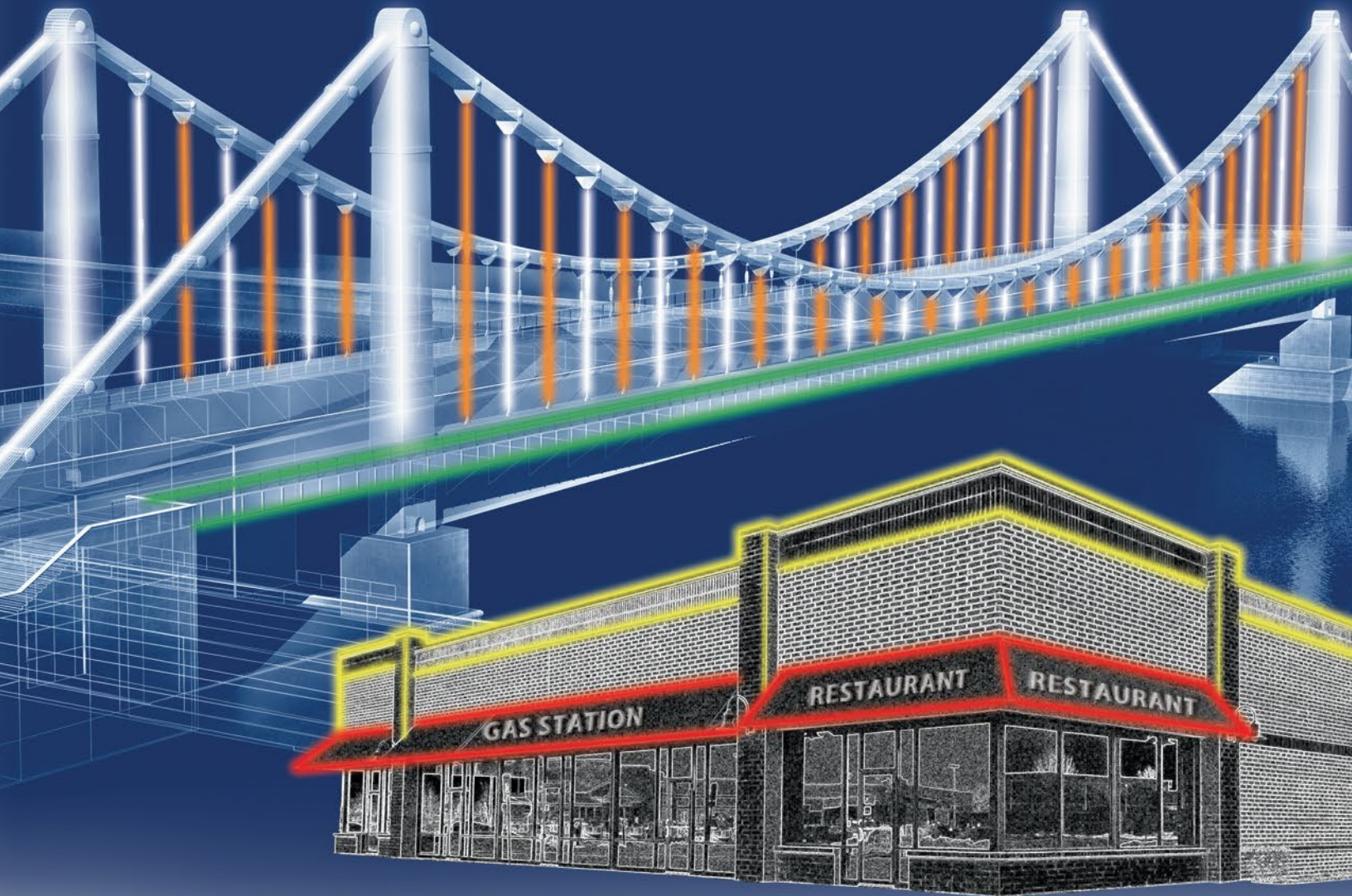


# Skyline

## LED Rigid Border Tubing



# Voice of The Customer



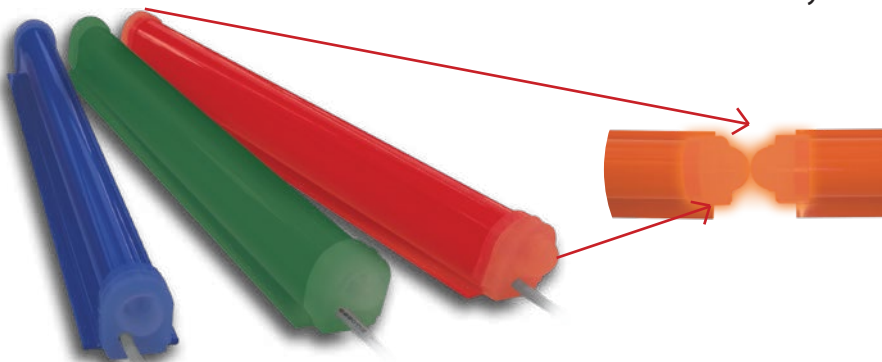
*"We are very pleased with the product we recently installed at Wendy's. Allanson's SkyLine was simple to install. We were amazed that it was brighter than traditional Neon, and the customer was happy with the 5 year warranty Allanson offers" - John Hose, President i2 Visual, Inc.*

**Wendy's, Fort Myers, FL**

## SkyLine Rigid Border Tubing

Allanson's LED SkyLine Rigid Border Tubing provides top of the line LED systems that complement and enhance the appearance of your building. With superior accent lighting, the sky's the limit!

- Seven standard colors (custom colors upon request\*)
- RGB SkyLine also available for color changing effects
- Balanced even illumination - no dead spots
- Non-bendable, UV resistant polycarbonate housing
- Sturdy stainless steel snap clip and aluminum slide attachments for easy mounting
- Dimmable (LED Dimmer ACL-12/24V-DMR)
- Standard and custom lengths available
- Field Cutting Kit (#ARB-T-CUTKIT) only available for seven standard colors to assist with on site adjustments
- Clean connection - wires are securely & effectively retained behind tubing
- UL & CUL listed outdoor & indoor wet, damp, & dry location
- Operating temperature: -40°C to 70°C
- White is 6000K, 122 Lumens per foot
- Uses Allanson CVW243-MV (waterproof) or CV244-120-277 Power Supplies
- 24 VDC System
- IP 67 rated
- 5 year standard warranty



**End caps allow for thermal expansion and contraction, and provide uniform illumination from end to end for a clean and sleek look.**



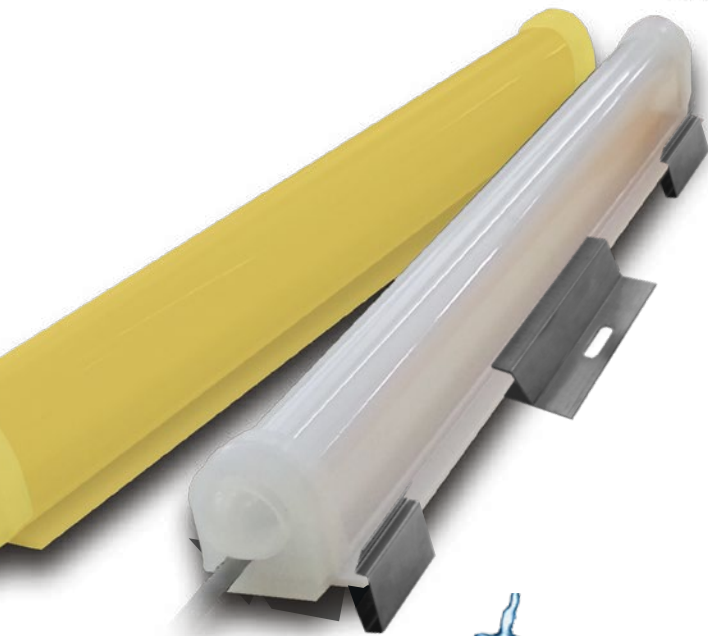
\*Minimum order quantity required.

# Powering Allanson's SkyLine



**IP68**

**CVW Waterproof Series**



**Easy Mounting with sturdy stainless steel snap clip & aluminum slide clips.**

## **24 V Waterproof Power Supply\***

- Fully encapsulated and water proof
- High Power Factor
- Short Circuit and overload protection
- UL recognized Class 2 rated for dry, damp and WET location
- CSA components certified
- Compact size and light weight
- Sealed wiring for wet location protection
- 30" white output cable for easy wiring
- Compact profile to minimize light obstruction
- Durable metal fittings for better grounding
- 5 year standard warranty

Part Number	Input Voltage	Output Volts DC	Dimensions (inch)	Max. Capacity
*CVW243-MV	120-277	24	10.5L x 1.91W x 1.5H	28 Ft.
CV244-120-277	120-277	24	9.5L x 1.7W x 1.18H	37 Ft.

# WARRANTY

Allanson provides a 5 year warranty on the SkyLine Rigid Border Tubes and on the LED Power Supplies. For more information, please contact Customer Service.

## Customer Service

83 Commerce Valley Dr. E., Markham, ON L3T 7T3  
cservice@allanson.com  
T: 1.800.661.7251 | F: 416.752.6717

[www.allanson.com](http://www.allanson.com)



\*Actual colors may vary from picture shown.

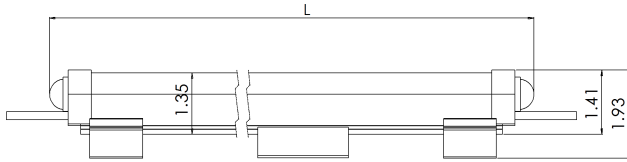
***For estimations, send .ai or .eps  
vector files to [led@allanson.com](mailto:led@allanson.com)***



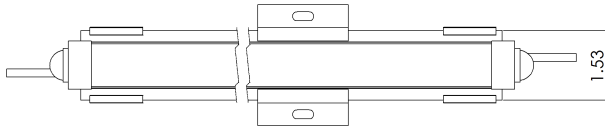
Information provided is subject to change without notice.

## SkyLine Rigid Border Tubing

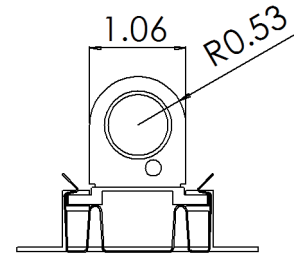
SIDE VIEW



TOP VIEW



END VIEW

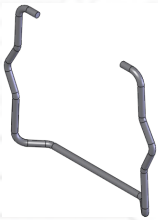


Installation hardware included but not attached.

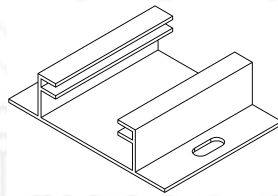
- Operating Temp: -40° C to 70° C
- Protection Class: IP67
- Power Capability: Max combined footage 37' per Allanson 96W 24 VDC Power Supply (CV244-120-277)
- Standard Colors: **Red (RD), Yellow (YL), Lemon Yellow (MY), Orange (OR), Cool White (CW), Blue (BL), and Green (GR).** [Custom colors upon request - minimum order quantity required]
- Power Consumption: 2.4Watt/Ft for standard colors and 7Watt/Ft for RGB color changing option.
- Installation Hardware: Stainless Steel Snap Clip, Aluminum Slide Clip, Wire Retainer Clip, Wire Nuts

### Installation Hardware Kit (54-012B)

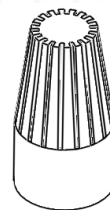
Additional installation hardware as required.



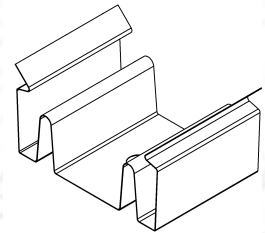
(Wire Retainer Clip x 1)



(Aluminum Slide Clip x 3)



(Wire Nut x 4)



(Stainless Steel Clip x 2)

Part number	Total Length (inch) (Outside Diameter)	Imperial Fraction	Watt	Amps
ARBT-98XX	98.20	98 <sup>3</sup> / <sub>16</sub>	19.04	0.79

- XX in part number denotes color (RD, YL, MY, OR, CW, BL and GR)
- For custom cut lengths or specific project requirements please contact your local Allanson Representative

For all your population services contact us at [led@allanson.com](mailto:led@allanson.com)

