


The instructions below are guidelines for installation of Allanson's Skyline Flexible Border Tubing. Installation requirements may vary depending on the application.


**Read the instructions completely and carefully and follow all National Electric Codes and local codes.**

**WARNING: Only qualified personnel should perform installation.**

To avoid electrical shock or component damage, disconnect the power before installation, service, or removal.

**Power Supplies Loading**

	Power Supply Part number	Output Watts	Input Voltage	Output Volts DC	Max. Capacity
<b>12V</b>	<b>ACV125-120-277V</b>	60W	120-277	12.0	16' 4" (5m)
	<b>ACV2125-120-277V</b>	120W (60 + 60)	120-277	12.0	16' 4" (5m) + 16' 4" (5m)
	<b>ACV3125-120-277V</b>	180W (60 + 60 + 60)	120-277	12.0	16' 4" (5m) + 16' 4" (5m) + 16' 4" (5m)
	<b>CVW125-120-277V*</b>	60W	120-277	12.0	16' 4" (5m)
	<b>CVW2125-120-277V*</b>	120W (60 + 60)	120-277	12.0	16' 4" (5m) + 16' 4" (5m)
	<b>CVW3125-120-277V*</b>	180W (60 + 60 + 60)	120-277	12.0	16' 4" (5m) + 16' 4" (5m) + 16' 4" (5m)
<b>24V</b>	<b>CV244-120-277</b>	96W	120-277	24.0	19' 8" (6m)
	<b>CVW244-120-277*</b>	96W	120-277	24.0	19' 8" (6m)
	<b>CVW2244-120-277*</b>	192W (96 + 96)	120-277	24.0	19' 8" (6m) + 19' 8" (6m)
	<b>CVW3244-120-277*</b>	288W (96 + 96 + 96)	120-277	24.0	19' 8" (6m) + 19' 8" (6m) + 19' 8" (6m)

\*IP68 rated

**Product Handling**

- 1) Do not bend past a diameter of 80mm/3.15" to avoid damage to internal components of the product (Fig.1).
- 2) Do not bend into 90° (Fig. 2)
- 3) Do not bend the product in the direction shown (Fig. 3 and Fig. 4)
- 4) Do not twist the product (Fig. 5)
- 5) Do not pull excessively on the connection wire. This can damage the connections inside the product
- 6) Ensure Allanson Class 2 power supply is being used. Please reference the power supply loading chart above
- 7) To minimize the voltage drop and maintain light consistency, minimize the length of wires between power supply and the product. Minimum 18GA is required.

Distance to Allanson Power Supply	Standard Copper Wire Gauge	Expected Voltage Drop
13 Feet	16 AWG	5%
20 Feet	14 AWG	5%
30 Feet	12 AWG	5%

Note: All darker shades in images below represent the luminescent surface.

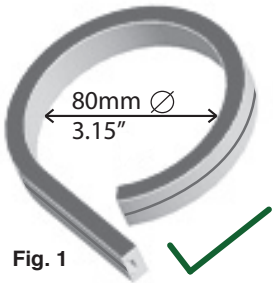


Fig. 1

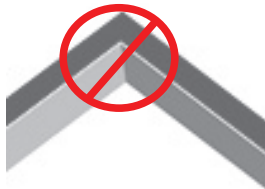


Fig. 2



Fig. 3

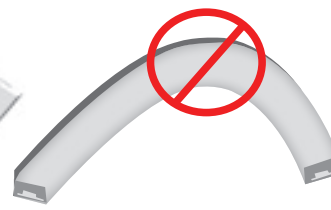


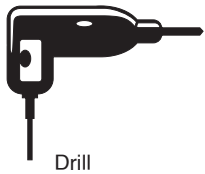
Fig. 4



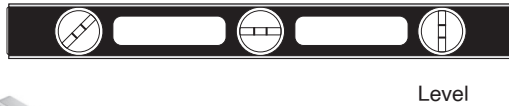
Fig. 5

### Tools and Mounting Hardware

Installation tools and mounting hardware required are subject to applications. Tools might include the following:



Drill



Level



Tape Measure



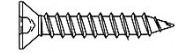
Chalk Line



Pipe Cutter  
(only used for field cut applications)



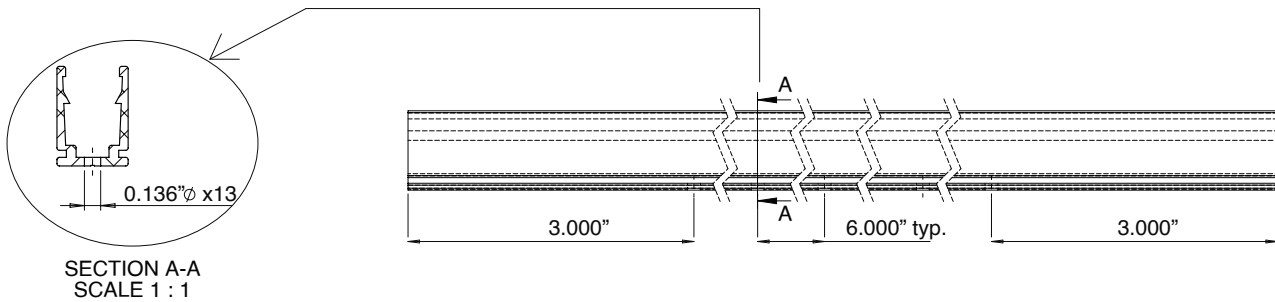
#6 pan head Screw  
(for outdoor application)



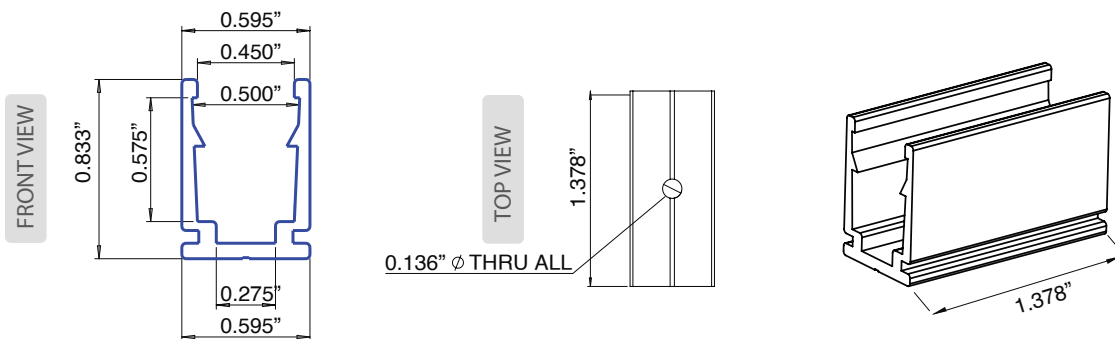
#6 countersink Screw  
(for indoor application)

### Mounting Accessory Options

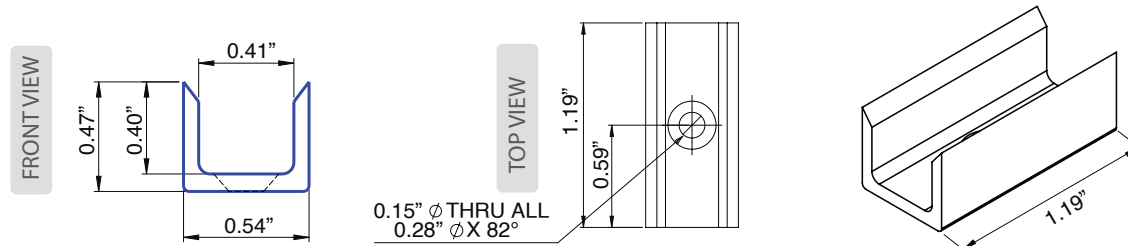
Self-locking aluminum extrusion (6' 6" length) (part number 07-967):



Self-locking aluminum mounting clip for outdoor application (part number 07-968):



Plastic mounting clip for indoor application (part number 07-969):



### Field Cut Instructions for Standard Colors and RGB (Dead-End Only)

1. Allanson Standard Color Flexible Border Tubes can be cut to shorter lengths in the field
2. Conditions must be dry and clean before cutting sections
3. Securely hold the flexible border tube product
4. Cut all sections directly aligned on the cut mark indicated on the product using a PVC pipe cutter (Fig. 6) (do not cut between cut mark lines as this will result in damage to the circuiting of the product)
5. Use dry cloth to wipe clean the cut end of the flexible border tube
6. Ensure cut end is clean and dry before moving onto the next step
7. Apply clear RTV (silicone) to the cut end of the flexible border tube and to the inside of the translucent end cap (fill end cap 1/3 with silicone). Avoid air pockets inside the end cap.
8. Push the end cap over the flexible border tube, forcing any air bubbled out (Fig. 7)
9. Make sure that the edge of the cap is sealed all around (Fig. 8)
10. Allow to set prior to installation
11. Using a damp cloth clean the flexible border tube before final installation

Fig. 6



Note: align PVC pipe cutter vertically to the cut mark before cutting to allow a precise cut.

Fig. 7

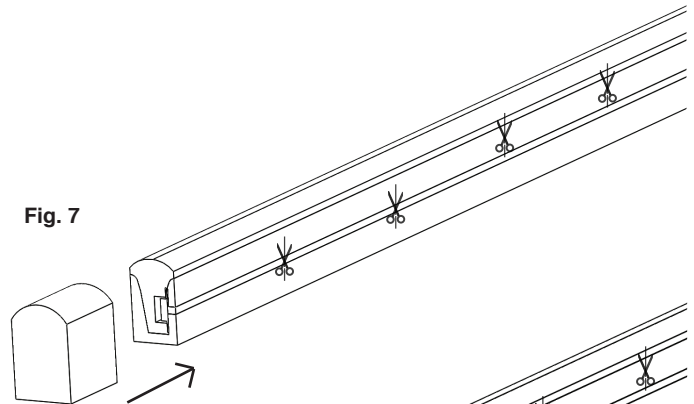
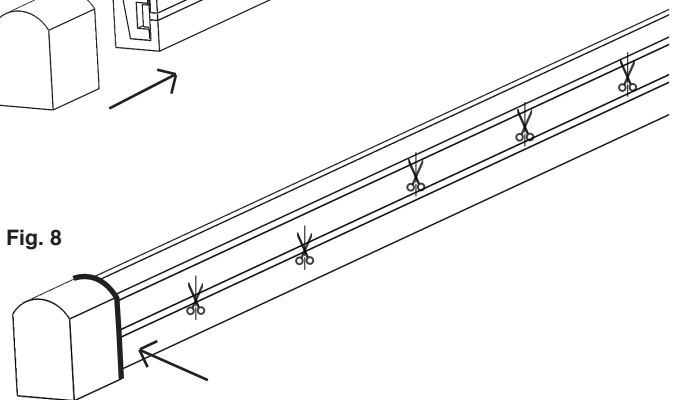


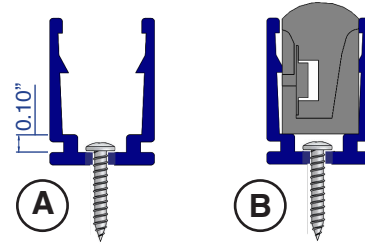
Fig. 8



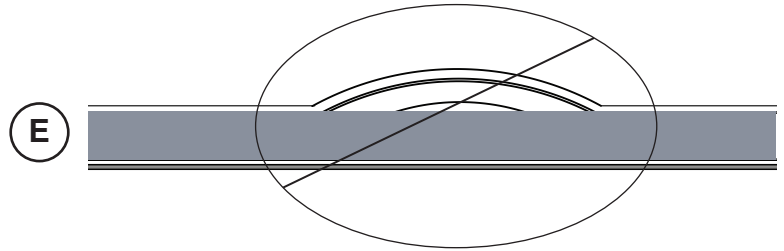
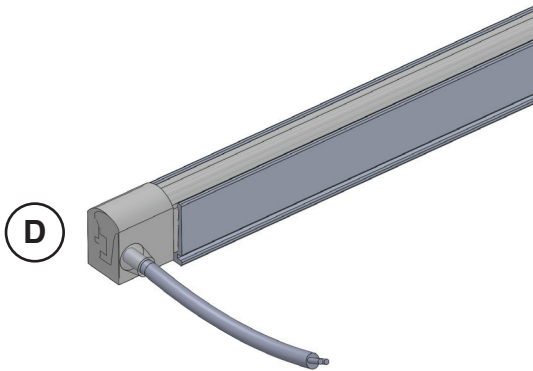


### 1. Straight run mounting installation

- A. Securely mount the self-locking aluminum extrusion with appropriate fasteners
- B. Ensure the fastener head is flush with the lower base of the aluminum extrusion
- C. Confirm measurements before inserting the product into the self-locking aluminum extrusion. Removing the product after insertion will result in damage to the product.
- D. Extend a minimum 1 inch (25.4 mm) of tubing on both ends from the self-locking aluminum extrusion. Do not force the end caps into the extrusion.

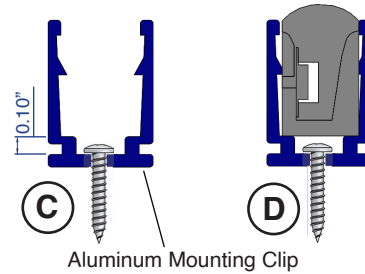


E. Insert the product starting from one end and continue to the other to avoid buckling in the middle.

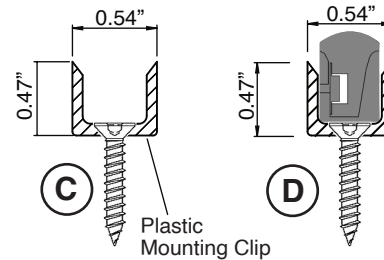


### 2. Free form shapes and letters mounting installation:

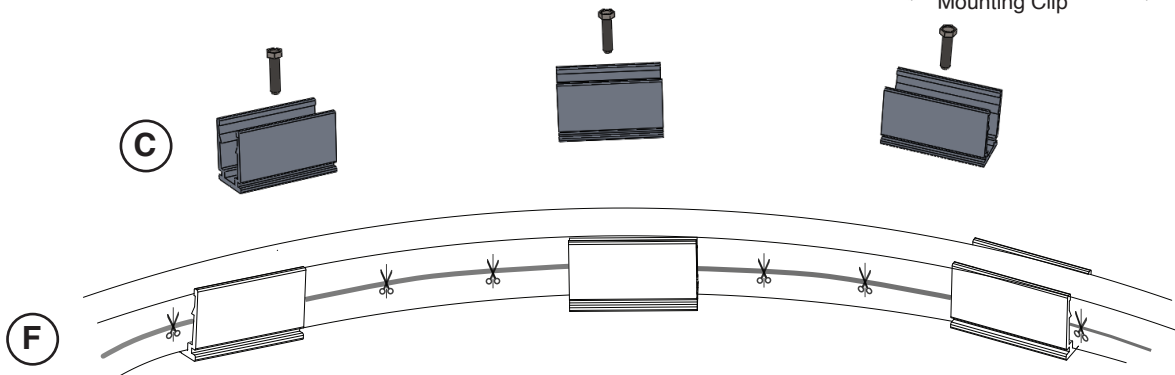
- A. Use self-locking aluminum mounting clips for outdoor application
- B. Use plastic mounting clips for indoor application
- C. Secure mounting clips using appropriate fasteners
- D. Ensure the fastener head is flush with the lower base of the mounting clips
- E. Confirm measurements before inserting the product into the self-locking aluminum mounting clips. Removing the product after insertion will result in damage to the product.
- F. Insert the flexible border tubing into the mounting clips. The number of clips and distance between them will be determined by each specific application.



Aluminum Mounting Clip



Plastic Mounting Clip





## Installation Tips

1. It is helpful to light up each section before you install it into the mounting extrusion to insure proper lighting. Once the flex is in the track it is a tight fit and very difficult to remove without damaging the tube.
2. A little spray of application fluid or water with a touch of dish soap into the aluminum extrusion will help facilitate placing the flex into the track.
3. When working with full rolls or long sections you will need two people to properly install the tubing into the track. One person to hold the extra flex and one person to place the flex into the extrusion. If the tubing is allowed to hang down the angle and the weight of the tube can damage the LED board in the flex.
4. Keep in mind when mounting the 6.5' extrusion to the building to leave room for the end caps, they do not fit into the extrusion.
5. If you should need to remove the tubing from the mounting extrusion, use a flat head screw driver and gently pry the tubing up as move down the extrusion. Too much "pulling pressure" can damage the LED board.

## Troubleshooting

1. Entire flexible border tubing does not light up
  - a. Ensure power switch is turned on
  - b. Confirm that Allanson Class 2 power supply is being used
  - c. Check polarity and all wiring connections (positive to positive and negative to negative)
2. Sections of flexible border tubing does not light up
  - a. Ensure product has not been bent incorrectly
  - b. Ensure product has not been cut between the cut mark lines
3. Product seems to be too hot and too bright
  - a. Make sure the proper voltage of power supply is being used (24VDC for standard color options and 12VDC for RGB color changing options)
4. Product seems to be too dim
  - a. Make sure the proper voltage of power supply is being used (24VDC for standard color options and 12VDC for RGB color changing options)
  - b. Make sure loading does not exceed max. capacity (refer to power supply loading chart on p.1)
  - c. Increase wire guage for long distance