



ColorMix
Lighting Solutions by Allanson



Tried · Trusted · True

Scotiabank
Arena



VIBRANT ANIMATED LIGHTING CONTROL



PRODUCT

Discover innovative lighting solutions designed for versatility, durability, and seamless integration.



SUPPORT

From planning to installation, our experts guide you every step of the way for a hassle-free experience.



CONTROL

Customize and program lighting effects with precision using our advanced controllers and accessories.

CONTACT US



+1-800-661-7251



www.allanson.com



cservice@allanson.com



ColorMix

Lighting Solutions by **Allanson**

SUPPORT



1

PROJECT LAUNCH

Get expert guidance to kickstart your lighting project with precision and confidence.



2

PRODUCT INQUIRY

Have questions? Our team is ready to help with product details, compatibility, and solutions.



3

LAYOUT + ESTIMATES

We assist in planning efficient layouts and provide accurate cost estimates for your project.



4

WIRING DIAGRAM

Clear, customized wiring diagrams ensure smooth installation and optimal performance.

PURCHASE



5

ALWAYS-ON TECHNICAL SUPPORT

Our team is here to ensure a smooth setup, programming, and troubleshooting experience. With in-house services and centralized product recommendations, we simplify your RGB projects from design to installation.



ADDRESSABLE MASTER CONTROLLERS



DMX & SPI Master Controller

ACL-MC-MP-VI

- Controls more than 10,000 LED modules.
- Supports DMX and SPI protocols
- 10.1" LED backlight LCD, true flat touch screen
- Fanless design, integral aluminum alloy profile for thermoregulation
- Rugged 3 piece housing (provides NEMA 4)
- Control multiple signs remotely via the internet, locally, or the cloud with a robust user-friendly interface



Addressable Controller

ACL-ADC-SPI

- Controls over 21000 modules
- Supports SPI & DMX protocols (non-simultaneous)
- 14 Programs can be stored with an SD card
- Day, hour, and minute time setting capability
- Maximum distance from controller to first module is 200 ft and between modules is 60 ft
- 120V AC power adaptor, channel adaptors, SD card, and SD card reader included



SPI ADDRESSABLE CONTROLLERS & COMPONENTS



TRANSMITTER

SPI Range Extender (Transmitter & Receiver)

ACL-SPI-EXT-TX & ACL-SPI-EXT-RX

- Converts standard TTL SPI signals to differential signals using a dedicated transmitter
- Converts received differential signals back to TTL levels for standard SPI interfacing via a dedicated receiver
- Extends the operational range of SPI communications from a few feet to a maximum 1000 ft
- Uses differential signaling and ethernet cables to minimize electromagnetic interference (EMI)
- Supports SPI data rates up to several Mbps, depending on specific implementations and distance
- Compatible with both 3.3V and 5V TTL-SPI logic levels
- Operates on input voltages 12V DC or 24V DC
- Reverse polarity and short circuit protection
- Provides visual feedback for power status, monitoring, and troubleshooting
- Compact, durable, and easy to install with minimal configuration
- Functions in harsh environments and includes protection against high humidity



RECEIVER



4xSPI Range Extender

ACL-SPI-TX/4-SPL/0



- Facilitates the amplification and independent operations of four channels
- Extends the reach of SPI signals over long distances
- Supports high-speed SPI data rates
- Compatible with both 3.3V and 5V TTL-SPI logic levels
- Operates on input voltages 12V DC or 24V DC
- Reverse polarity and short circuit protection
- Provides visual feedback for power status, monitoring, and troubleshooting
- Compact, durable, and easy to install with minimal configuration



4xSPI Splitter & Range Extender

ACL-SPI-TX/0-SPL/4



- Splits and amplifies SPI signal into four independent channels
- Supports high-speed SPI data rates
- Ensures signal stability for reliable communication over long distances
- Compatible with both 3.3V and 5V TTL-SPI logic levels
- Operates on input voltages 12V DC or 24V DC
- Reverse polarity and short circuit protection
- Provides visual feedback for power status, monitoring, and troubleshooting
- Compact, durable, and easy to install with minimal configuration

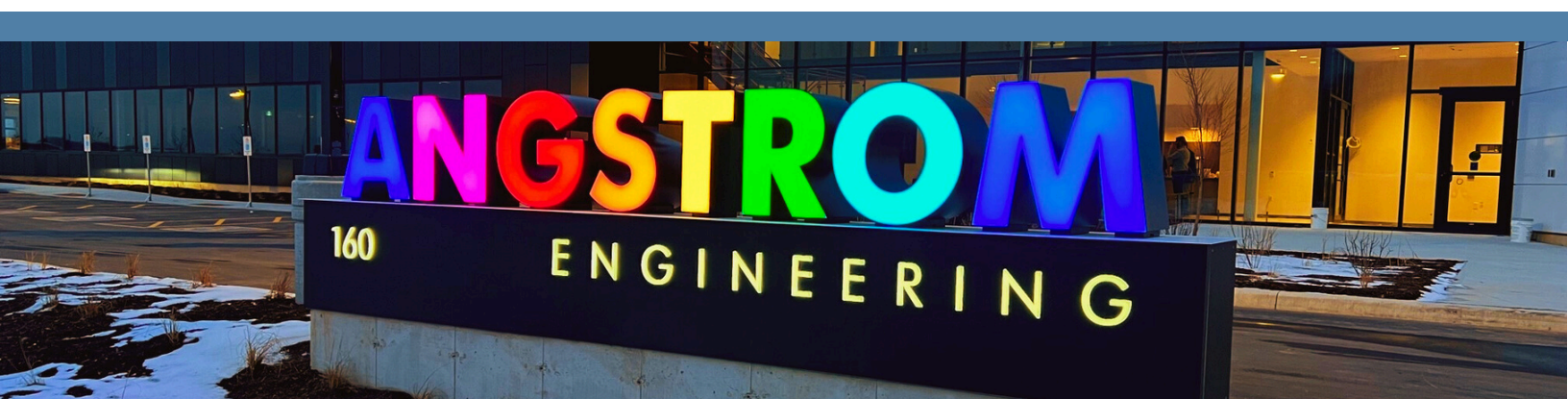


Addressable Pre-programmed Controller

ACL-ADPPC



- Controls from 8 to 1020 modules
- 16 Preset Programs
- Adjustable Speed, direction, fade, and strobe
- Maximum RF transmission distance is 130 ft line of sight
- Maximum distance from controller to first module or between modules is 60 ft
- Wireless remote and 120V AC power adaptor included



DMX MASTER CONTROLLERS

DMX Master Controller

ACL-MC-DMX-1U

IP68 CE FC RoHS



- 6 selectable modes. Buttons (8), Pages (10), Zones (1)
- Color (99 RGB + 8 RGBW)
- Commands from the contacts (speed, scene, dimmer, zone)
- Time clock setting adjustable manually in stand alone.
- 16-bit and fine channel management
- Automatic scene recovery if the power is cut off
- Cross fade time between scenes
- Turn off display after 4s., default start scene, dimmer and RGB color selection.
- Master/Slave mode with up to 32 devices combined and synchronized (64 universes)



Pre-Programmed Master Controller

ACL-PPMC-DMX

- 16 sub-controller capability
- 32 preset programs available
- Develop your own color with 255 level of each red, green, and blue
- Microphone for sound control
- Adjustable speed and intensity
- Maximum distance from DMX master controller to sub-controller is 200 ft
- 120V AC power adapter included



DMX SUB-CONTROLLERS

DMX Sub-Controller

ACL-SC-DMX

IP65 cULus

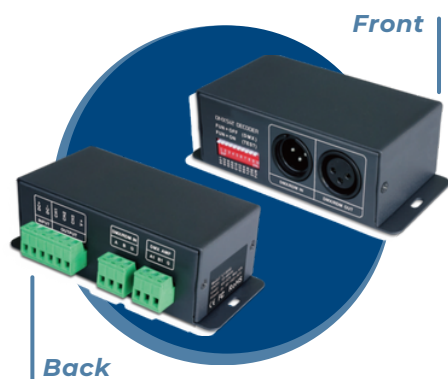


- Control intensity, brightness, dimming, and fading of RGBW colors through a single output channel
- Generates of diverse RGBW lighting effects
- Easy programming of DMX channels through an external programmer, eliminating issues associated with DIP switch settings found in other controllers
- Ensures smooth operation and compatibility with other DMX devices, supporting the daisy-chaining of multiple DMX decoders
- Designed for versatile use in both outdoor and indoor environments
- Features an emulating LED function to identify the output LED colors
- Includes overload and short-circuit Protection

DMX Sub-Controller

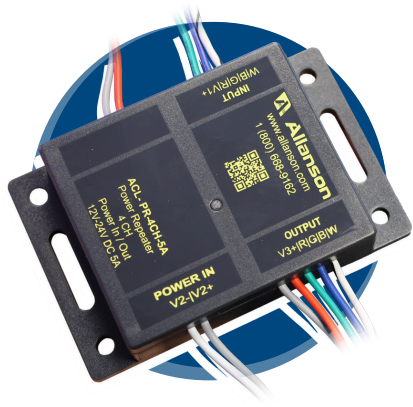
ACL-SC3C4A-DMX

cULus



- Runs up to 80 modules of RGB3 System or 12 ft of RGB Rigid Border Tubing
- Uses 12V DC or 24V DC
- 8 built-in dip switch preset programs
- Operates independently or as part of a system





4 Channel Power Repeater

ACL-PR-4CH-5A



- PWM RGBW Signal Amplification: Synchronized LED control across multiple strips
- High Load Capacity: Supports up to 5A per channel, total 5A across all channels
- 3kV Isolation: High-speed optocouplers protect against electrical surges
- Extended Reach: Ideal for large or complex LED installations
- Signal Integrity: Prevents loss, ensuring uniform brightness and color
- Multi-Channel Support: Flexible, scalable RGBW lighting setups
- Broad Compatibility: Works with various LED controllers and systems
- Durable & Compact: Long-lasting with efficient space use
- LED Power Indicator: Visual feedback for power status



RJ45 Adapter

ACL-SIG-AD



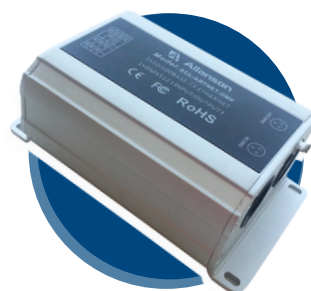
- Converts RJ45 cable connections into individual spring-cage terminals
- 8-Pin Terminal Block: Supports all 8 wires in a standard RJ45 connection
- Works with Ethernet cables for high-speed data transmission.
- Durable Housing for Indoor/Outdoor Use: Sturdy and compact design
- Spring-cage terminals: For quick, secure wiring
- Suitable for connecting control/networking devices to other devices or for data transmission in custom applications.
- Ideal in lighting controller wiring, DIY electronics projects, and networking setups.
- Outdoor environmental protection against high humidity



SPI Signal Amplifier and Splitter

ACL-SPI-SA

- Extends the SPI signal distance an extra 100 ft when used with the Allanson Signal Cable or an extra 60 ft when used with the CAT5 cable
- Multiple amplifiers can be used



DMX512/Network Converter

ACL-ARTNET-DMX

- Sending DMX signal over IP networks
- Can be configured in two ways: DMX512 to Network or Network to DMX512



WI-FI CONTROLLERS & COMPONENTS



WI-FI LED Controller

ACL-WIFI-106

- 5 in 1: DIM / CT / CCT / RGB / RGBW mode allow simultaneous light control
- Control using your iOS, Android devices, or F12 RF remote
- Connect to WIFI directly or by a router
- Programmable
- Multiple zone control capabilities
- Zones 2-12 require the use of ACL-WR-F4-3A Wireless Receiver



Wireless Receiver

ACL-WR-F4-3A

- RF 2.4GHz wireless signal, no need for signal cable
- Dimming, CT, RGB, RGBW LED lights can be controlled
- Compatible with F series remote
- Support APP if equipped with ACL-WIFI-106 gateway



Wireless Remote Control

F12 RF Remote Control

- Included with Wi-Fi 106 Controller
- Working Voltage: 3V DC (Battery CR2032)
- Wireless Frequency: RF 2.4 GHz
- Weight (G.W.): 85g
- Features: 8 scene-mode keys





ColorMix

Lighting Solutions by **Allanson**



Tried · Trusted · True

SCAN HERE



For more information contact
our customer service team or
scan the QR code to visit our
website



+1-800-661-7251



www.allanson.com



cservice@allanson.com