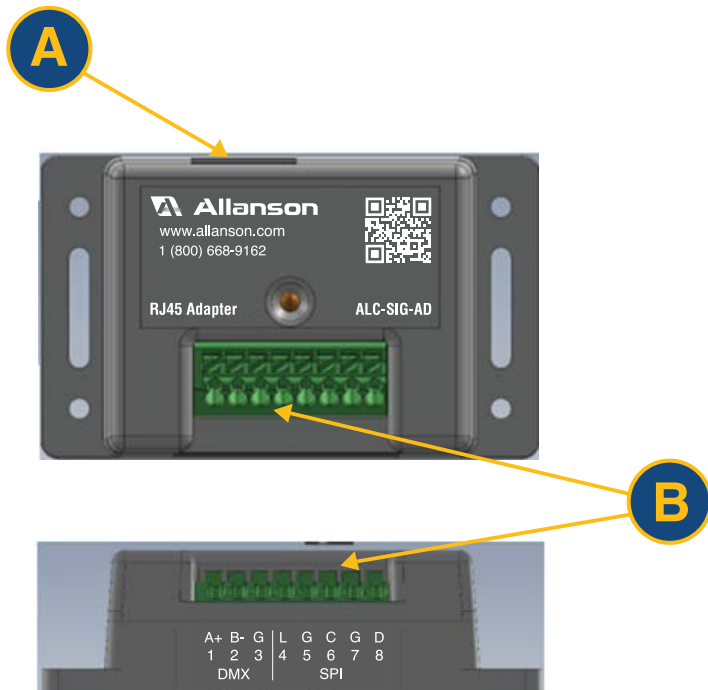


Installation Instructions for ACL-SIG-AD

Thank you for your purchase of our RJ45 Adapter ACL-SIG-AD. Prior to installing the product, we kindly request that you carefully review all the provided instructions. For any specific requirements tailored to your needs, please reach out to our LED department at led@allanson.com

RJ45 Adapter ACL-SIG-AD

Signal In/Out: SPI/DMX Terminal Block
 Signal In/Out: SPI/DMX RJ45 Port
 Dimensions (LxWxH): 3.0" x 1.8" x 0.88"



Specifications

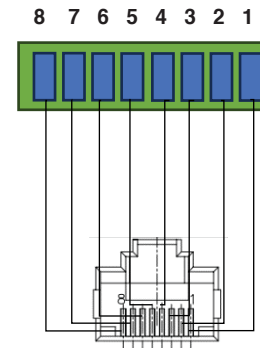
A. RJ45 - Pins 1 to 8 Signal In/Out

- Pin 1.....DMX A+
- Pin 2.....DMX B-
- Pin 3.....GND
- Pin 4.....SPI Latch
- Pin 5.....GND
- Pin 6.....SPI Clock
- Pin 7.....GND
- Pin 8.....SPI Data

B. Terminal Block - Pins 1 to 8 Signal In/Out

- Pin 1.....DMX A+
- Pin 2.....DMX B-
- Pin 3.....GND
- Pin 4.....SPI Latch
- Pin 5.....GND
- Pin 6.....SPI Clock
- Pin 7.....GND
- Pin 8.....SPI Data

Internal Connections



Note

- The product shall be installed and serviced by a qualified person.
- This unit is a water splash proof product. Please avoid the direct sun and rain and that will prolong the working life of the controller. Please ensure good ventilation.
- Ensure all wire connections and polarities are correct before applying power to avoid any damage to the LED and RGB products.
- If a fault occurs, please return the product to your supplier. Do not attempt to fix this product by yourself.
- This manual only applies to this model. Allanson reserves the right to make changes without prior notice.
- It's recommended to use wire gauge AWG 24-18, solid or stranded, with a strip length of 6mm for the terminal block connections.

