



# SHELL SKYBAR

LED Rigid Border Tube Installation Instruction



## SHELL SKYBAR

LED Rigid Border Tube  
Installation Instruction



cservice@allanson.com | 1.800.661.7251 | www.allanson.com  
Information in this manual is subject to change without prior notice

#21-480  
11.24.23

## Disclaimer

---

**Important:** Please make sure to read, understand and follow all the information and instructions in this guide. Failure to install Allanson's LED Rigid Border Tube as described here will void any product warranty.

**Important:** Always work according to the Shell Life Saving Rules

**Warning:** Failure to strictly follow these instructions may subject the installer or others to personal injury. Failure to strictly follow these instructions will also void the manufacturer's warranties and may cause risk of fire, product damage, damage to property and injury to persons. Please read all warnings contained below and follow all instructions carefully.

## Tools Required for Installation



Power Drill



Measuring Tape



Waterproof Mallet



Chalk Line Reel

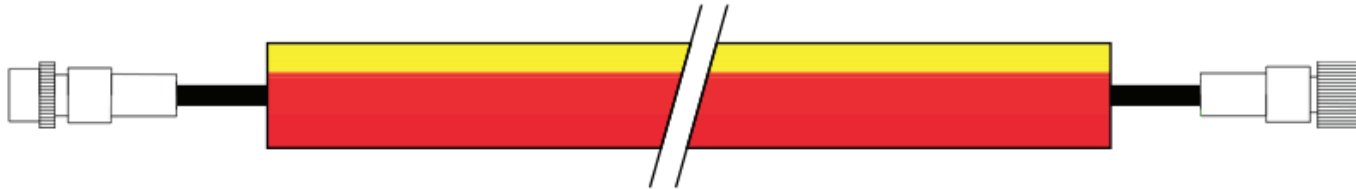


Wire Cutter/Stripper



Self Drilling Screws

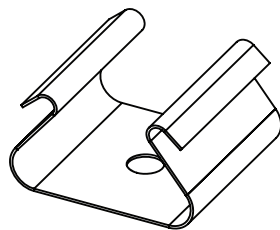
## LED Rigid Border Tube Components List



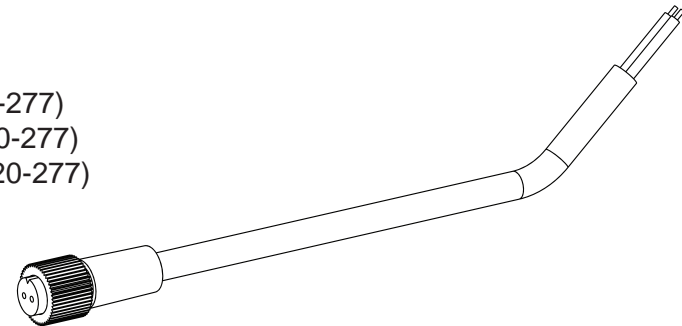
**Allanson's Shell Skybar LED Rigid Border Tube**  
(Part# ARBT-106RY)  
(Part# ARBT-53RY)



**Power Supply**  
(One Channel Part# CVW244-120-277)  
(Two Channels Part# CVW2244-120-277)  
(Three Channels Part# CVW3244-120-277)

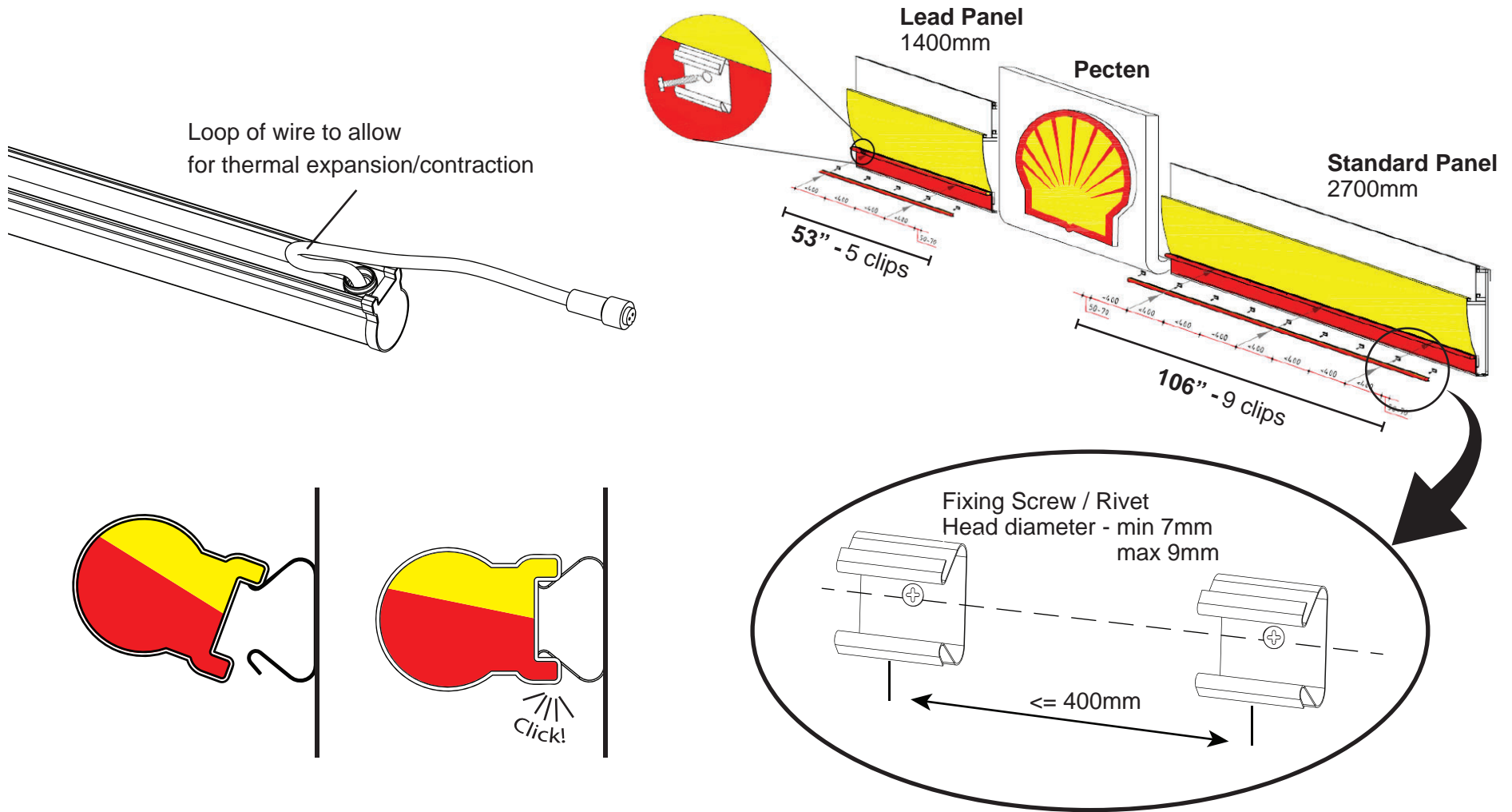


**Clip**  
(Part# 27-613)

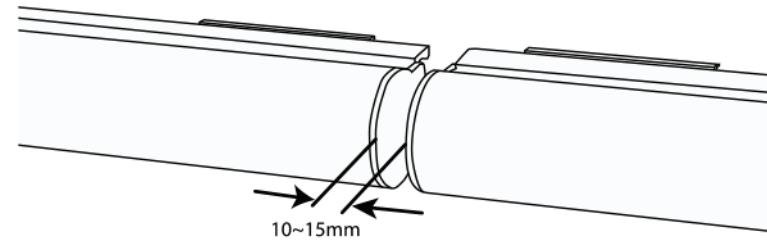
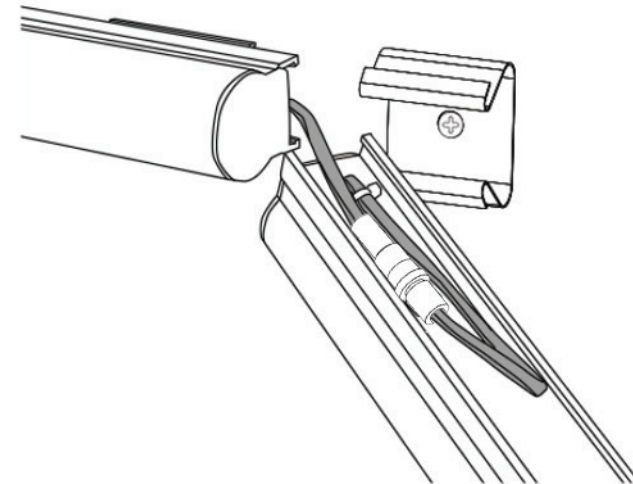
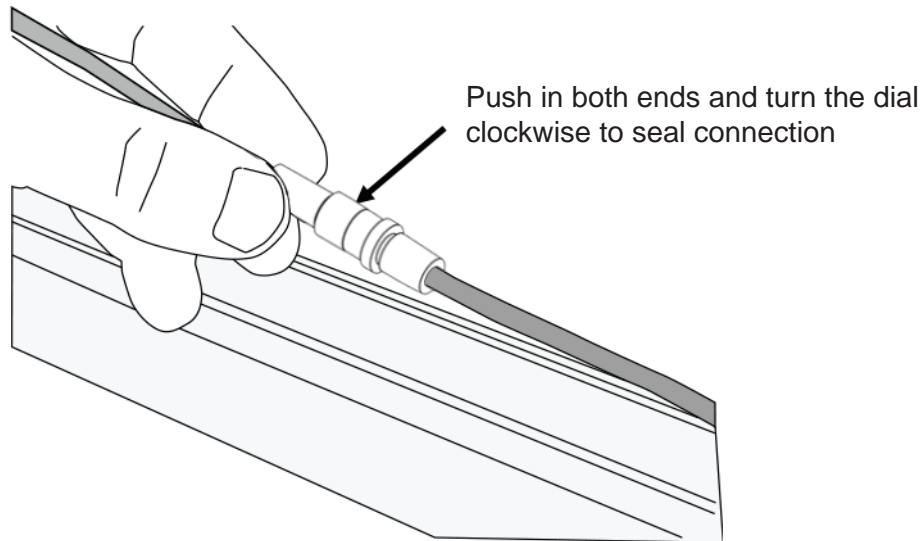


**Female Connector (with pigtail)**  
(Part# 27-525C)

### Installing Dual Colour LED Rigid Border Tube



## Installing Dual Colour LED Rigid Border Tube



**LED Rigid Border Tube Custom Cut Length: Tools Required**



Sandpaper



Measuring Tape



Tape



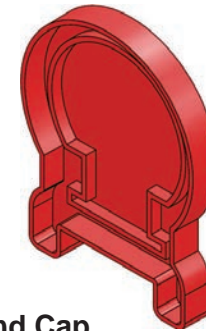
Acrylic Cement



Flashlight



Miter Box



End Cap  
(Part# 29-339A)



Saw

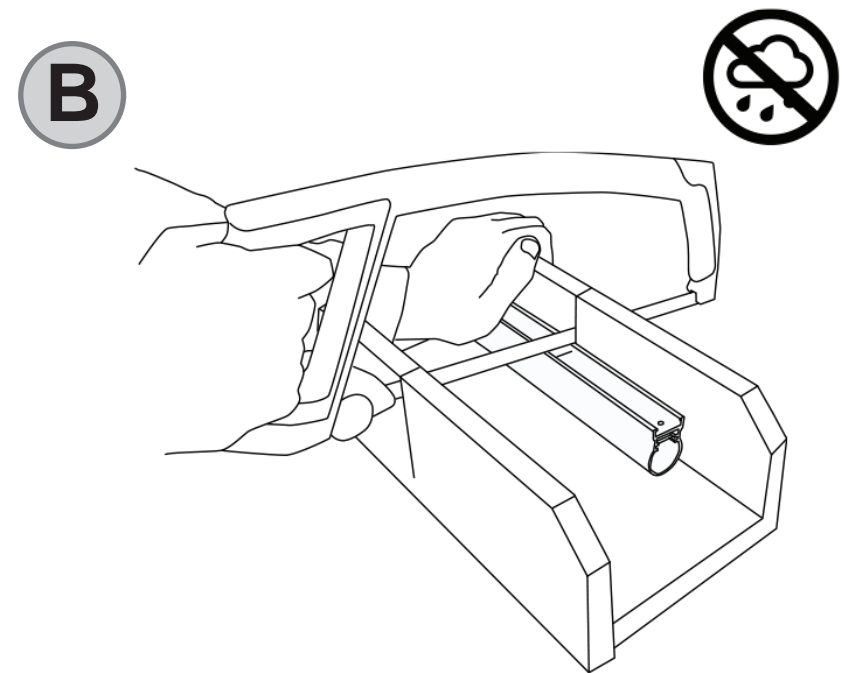
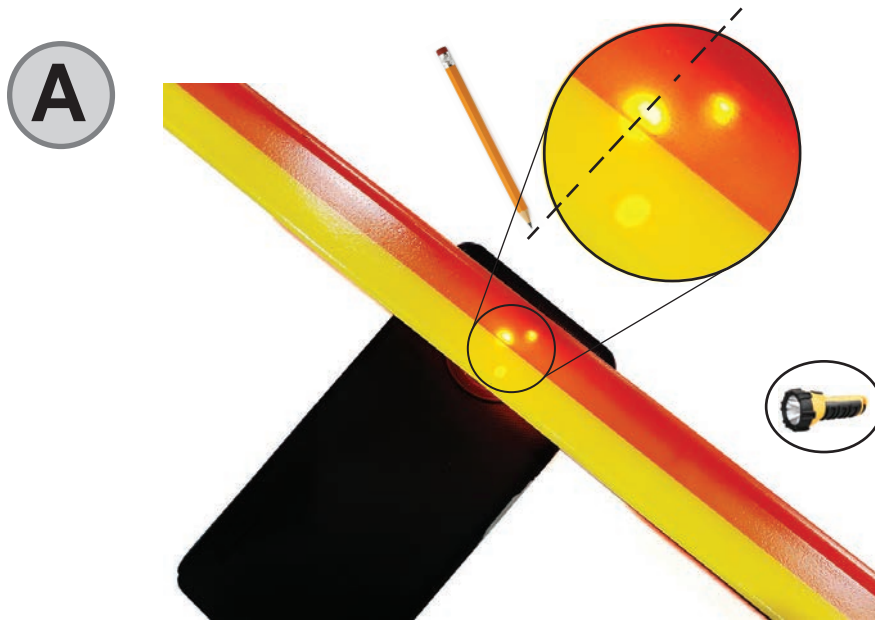


Pencil



Waterproof Mallet

## LED Rigid Border Tube Custom Cut Instruction

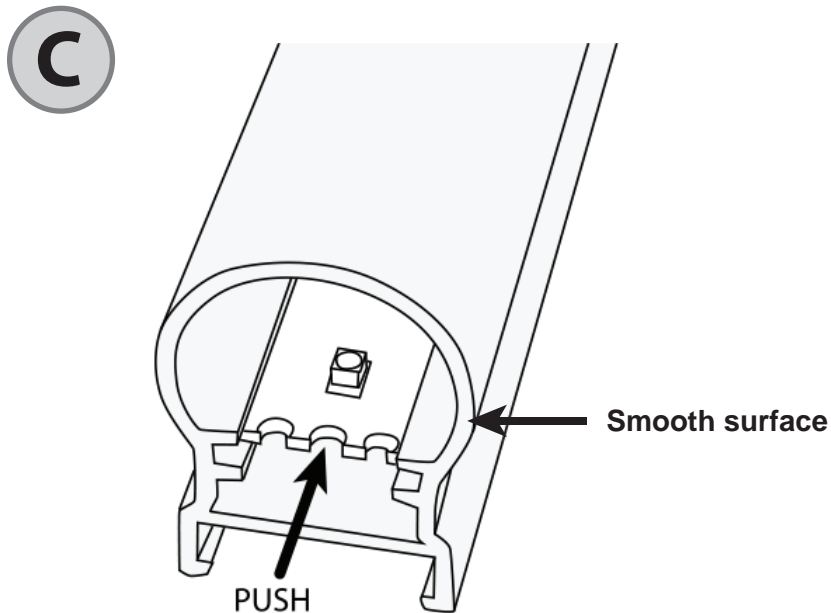


Starting from the LED Rigid Border Tube lead wire, measure out the desired length. To locate the cut position, shine a flashlight (or smart phone with torch function) from the face side. Cut position will be seen as ONE bright dot next to two bright dots along the rear of the tube. Mark the required cut position.

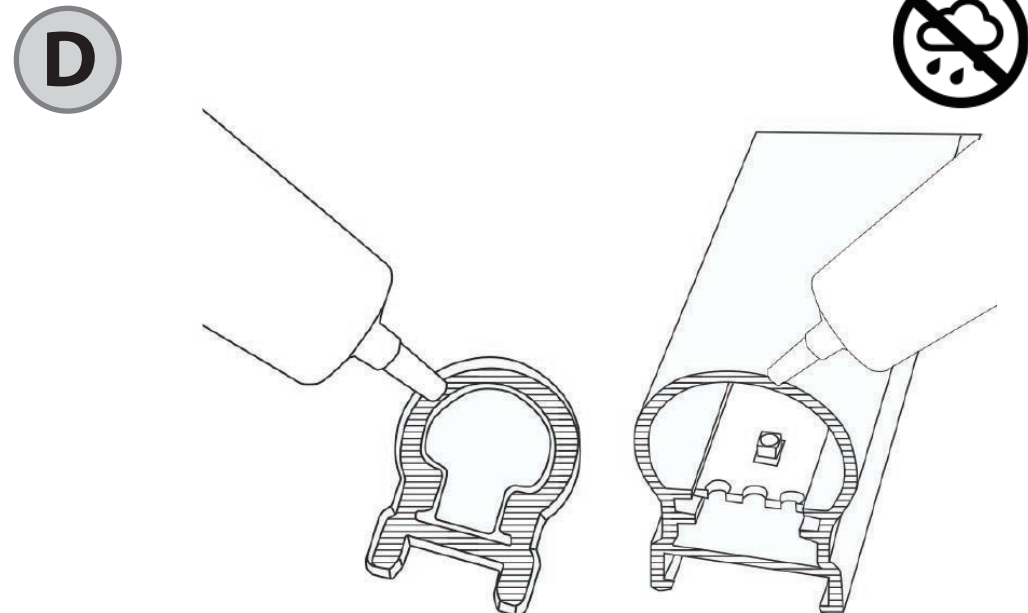
Place LED Rigid Border Tube into a mitre box. Using a hacksaw with a fine-tooth blade, cut the LED Rigid Border Tube to desired length. **Cuts must be square** and free of burrs.



## LED Rigid Border Tube Custom Cut Instruction



Remove any burrs and foreign material from the cut end. Ensure the cut is clean and square, sand if necessary. Before fitting the field endcap, push the cut circuit board into the tube as far as it will go to ensure endcap will fit. Any visible cut wires must be isolated.

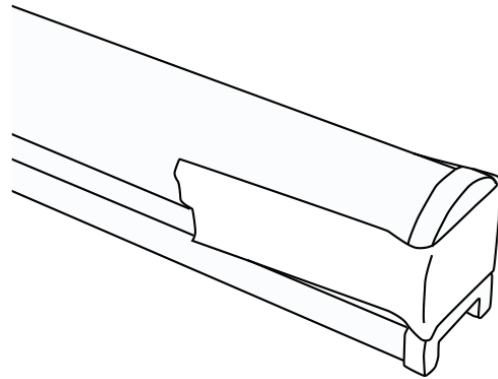


Apply a generous continuous bead of Weld-On 16 to both the endcap and the cut end of the LED Rigid Border Tube.

**USE WELD-ON 16 OR EQUIVALENT SEALANT IN A WELL VENTILATED AREA. BE SURE TO FOLLOW THE SAFETY INSTRUCTIONS LISTED IN THE SEALANT MANUFACTURER'S USER'S GUIDE.**

## LED Rigid Border Tube Custom Cut Instruction

**E**



Use strong tape to top clamp the end-cap in position for at least 5 minutes before handling the tube further. Once the glue is dry, the adjusted tube section can be fitted.

**WARNING:** When installing endcaps in the field, a watertight seal must be maintained. The LED Rigid Border Tube must be cut square and free from all debris to ensure a watertight seal and to avoid electrical failure. Use of other types of saws and/or use of a dull blade may lead to chipping or cracking of the extrusion or create a cut that will result in an unreliable seal, causing the product to fail. Ensure extrusion bonding surface is clean. Contaminants or any adhesive other than Weld-On #16 (or equivalent) on this surface may lead to poor bonding, water ingress, and product failure. Product failures resulting from failure to strictly follow field cutting instructions or poor workmanship are not covered by any product warranty. Failure of field end-cap to maintain a watertight seal will lead to water ingress and product failure. Product failures of this type could result in electrical shock and/or fire and damage to the product and materials which may come in contact with the product. Electrical shocks may cause injury

**Attention: Do's and Don'ts**



**Don't hold the LED Rigid Border Tube only by its cable**

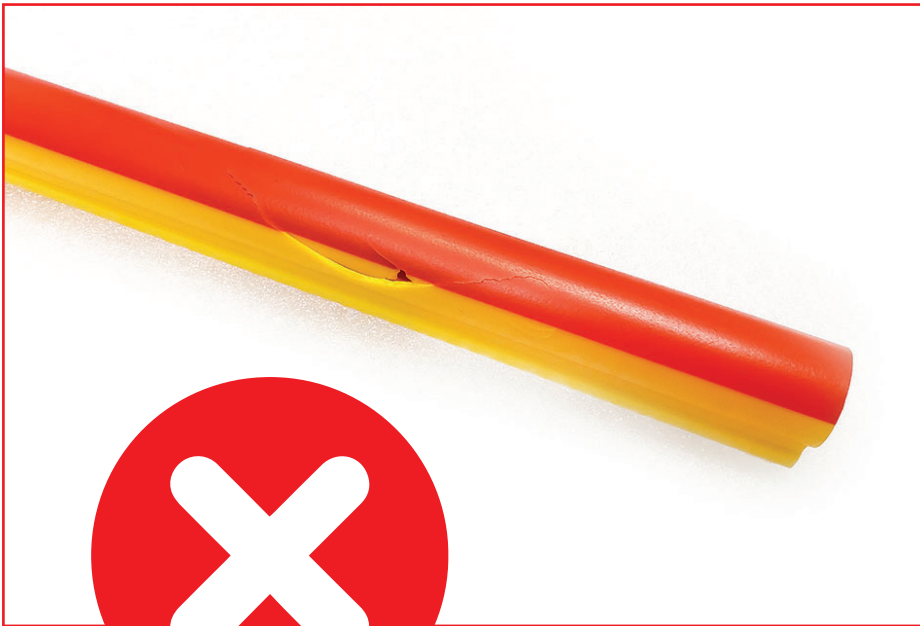


**Always hold the LED Rigid Border Tube by its tube**



## Attention: Do's and Don'ts

Always check for damage before installation.  
Never install defective LED Rigid Border Tube.



## Attention: Do's and Don'ts

Never try to repair damaged LED Rigid Border Tube.  
Always replace damaged LED Rigid Border Tube with new replacement parts.

